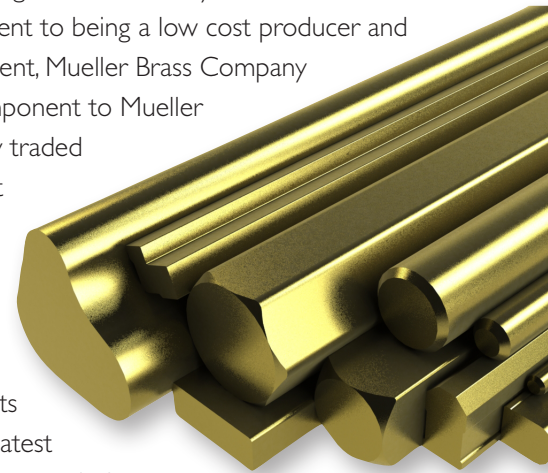


Mueller Brass Company is a world class producer of standard, low lead and lead free brass rods and bars for machining, thread rolling and forging applications.

Established in 1917, Mueller Brass Company has not only endured the economic ups and downs, but has emerged as an industry leader in the brass rod and bar industry. Through its commitment to being a low cost producer and its dedication to continuous improvement, Mueller Brass Company has established itself as an integral component to Mueller Industries; a financially secure, publicly traded corporation with a number of different businesses curtailing to companies in different markets all over the globe.

With its state of the art manufacturing facilities, Mueller Brass Company has maintained its focus on its core fundamentals and embraced the latest in manufacturing technology to emerge as an industry leader and low cost producer of brass rod and bars in a variety of shapes, sizes and alloys. In addition to conventional alloys like **C36000, C37700** and others, Mueller Brass Company also produces highly engineered alloys like C35330



Mueller Brass Company AT A GLANCE

Longevity & Financial Stability

- Established in 1917, Port Huron, MI
- A Mueller Industries (NYSE:MLI) Company

Operations and Facilities

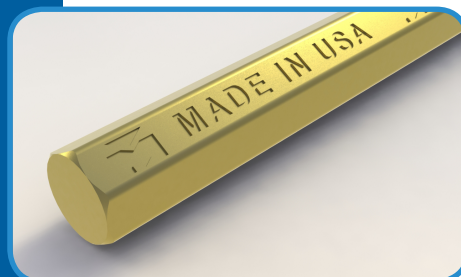
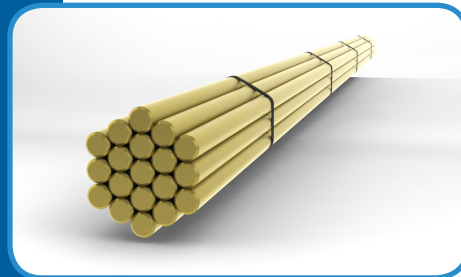
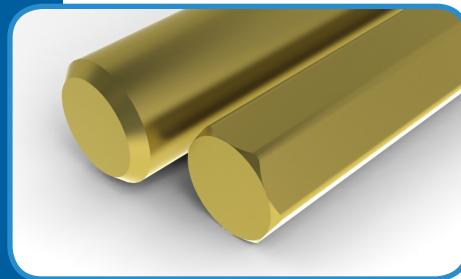
- Two modern and vertically integrated manufacturing facilities in Belding, MI and Port Huron, MI
- Industry leading Customer Service Team
- Adaptation of LEAN and 6 Sigma philosophy and manufacturing principles

State of the Art Equipment

- Latest in semi-continuous and continuous casting technology
- Modern indirect extrusion press and completely automated material handling system
- New high speed finishing lines
- Cast and Turned Billet capabilities

Commitment to Quality

- TS 16949 Certified Laboratory
- Equipped for chemical and mechanical testing, spectrographic analysis and the latest in x-ray florescence and optical emission analytical equipment
- JOEL Scanning Electron Microscope
- Both facilities are ISO 9001 and PED Certified



Dezincification Resistant Brass and **C67300 Dynalloy™ Bearing Bronze.**

To further compliment its vast alloy offering, Mueller Brass Company recent introduced its EcoStream™ family of alloys and products to provide manufacturers with a practical alloy or product solution as they begin to produce components and products requiring compliance to lead free potable water regulations and/or NSF PEX standards. Highlighting the EcoStream™ family of alloys and forged parts, Mueller Brass Company's **GreenDrop™ C27450 Lead Free Brass Alloy** provides the customer with a practical material solution that is not only **COMPLIANT**, but is also **COMPETITIVE** in comparison to other alternative alloys and completely **COMPATIBLE** with conventional leaded alloys commonly used today.

BRASS ROD



Product Offering

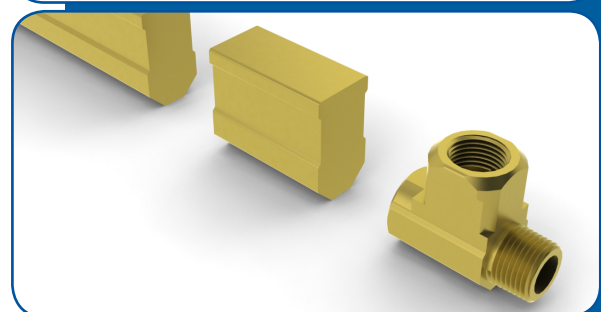
- Products include rounds, hexagons, squares in addition to special shapes and profiles for customers' specific applications.
- Full range of sizes from 0.250" to 4.000" (6.35mm to 101.6mm)
- Cast and Turn Billets. (Consults mill for sizes and availability)

Products and General Information			
Alloy No.	Description	Chemical Composition	Applications
Standard Alloys			
C34500	Thread Rolling Brass	Cu: 62.0 ~ 65.0 / Pb: 1.5 ~ 2.5 / Fe: 0.15(max) / Zn: Rem	Machining, Thread Rolling, Knurling
C35300	Medium Leaded Brass	Cu: 60.0 ~ 63.0 / Pb: 1.5 ~ 2.5 / Fe: 0.15(max) / Zn: Rem	Machining, Thread Rolling, Knurling
C36000	Free Cutting Brass	Cu: 60.0 ~ 63.0 / Pb: 2.5 ~ 3.0 / Fe: 0.35(max) / Zn: Rem	General Screw Machining
C37700	Forging Brass	Cu: 58 ~ 61 / Pb: 1.5 ~ 2.5 / Fe: 0.30(max) / Zn: REM	General Forging
Engineered Alloys			
C35000	Medium Leaded Brass	Cu: 60.0 ~ 63.0 / Pb: 0.8 ~ 2.0 / Zn: Rem	Machining, Thread Rolling, Knurling
C35330	Dezincification Resistant Brass (DZR Brass)	Cu: 59.4 ~ 64.0 / Pb: 1.5 ~ 3.5 / As: 0.02 ~ 0.25 / Zn: Rem	Machining, Hot Forging Dezincification Resistance
C38500	Architectural Bronze	Cu: 55.0 ~ 59.0 / Pb: 2.5 ~ 3.5 / Fe: 0.35(max) / Zn: Rem	Machining, Hot Forging
C48500	Naval Brass - High Leaded	Cu: 59.0 ~ 62.0 / Pb: 1.3 ~ 2.2 / Sn: 0.50 ~ 1.0 / Fe: 0.10(max) / Zn: Rem	Machining, Hot Forging
C66800	Manganese Bronze	Cu: 60.0 ~ 63.0 / Al: 0.25(max) / Fe: 0.35(max) / Pb: 0.50(max) / Mn: 2.0 ~ 3.5 / Ni: 0.25(max) / Si: 0.5 ~ 1.0 / Sn: 0.30(max) / Zn: Rem	Machining, High Strength Applications
C67300	Dynalloy	Cu: 58.0 ~ 63.0 / Pb: 0.4 ~ 3.0 / Si: 0.5 ~ 1.5 / Fe: 0.50(max) / Al: 0.25(max) / Mn: 2.0 ~ 3.5 / Ni: 0.25(max) / Si: 0.5 ~ 1.5 / Sn: 0.30(max) / Zn: Rem	Machining, Hot Forging
C67600	Manganese Bronze	Cu: 57.0 ~ 60.0 / Pb: 0.50 ~ 1.00 / Sn: 0.50 ~ 1.500 / Fe: 0.40 ~ 1.30 / Mn: 0.05 ~ 0.50 / Zn: Rem	Machining, Hot Forging
EcoStream™ Lead Free and Low Lead Alloys			
C27450	GreenDrop™ Lead Free Plumbing Brass	Cu: 60.0 ~ 65.0 / Pb: 0.25(max) / Fe: 0.35(max) / Zn: Rem	Machining, Hot Forging
C27451	GreenDrop™ DZR Lead Free Plumbing Brass	Cu: 61.0 ~ 65.0 / Pb: 0.25(max) / Fe: 0.35(max) / P: 0.05 ~ 0.20 / Zn: Rem	Machining, Hot Forging Dezincification Resistance
C36300	Copper - Zinc - Lead Alloy	Cu: 61.0 ~ 63.0 / Pb: 0.25 ~ 0.70 / Fe: 0.15(max) / P: 0.04 ~ 0.15 / Zn: Rem	Machining, Hot Forging
C37000	Free Cutting Muntz Metal	Cu: 59.0 ~ 62.0 / Pb: 0.8 ~ 1.5 / Fe: 0.15(max) / Zn: Rem	Machining, Hot Forging



ROUND ROUNDED HEX SHARP SQUARE OCTAGON SPECIAL SHAPE

Products: Size & Shape Ranges	
Capabilities:	Size Ranges:
Rounds	0.250" x 4.000" (6.35 x 101.60mm)
Hexes (sharp and rounded corners)	0.250" x 3.500" (6.35 x 88.90mm)
Squares	0.375" x 2.000" (9.53 x 50.30mm)
Octagons	0.375" x 3.500" (9.53 x 88.90mm)
Rectangles / Special Shapes	CONSULT MILL
Tighter than ASTM dimensional and straightness tolerances	CONSULT MILL



Port Huron Mill

2199 Lapeer Avenue • Port Huron, MI 48060
(P) 800.553.3336 • (P) 810.987.7770
(F) 810.987.9108

Belding Mill

302 Ashfield Street • Belding, MI 48809
(P) 800.553.3336 • (P) 616.794.1200
(F) 616.794.1214

www.muellerbrass.com